



GAT MONTHLY MEMBERSHIP PROGRESS REPORT

Results as of: 3/31/2021

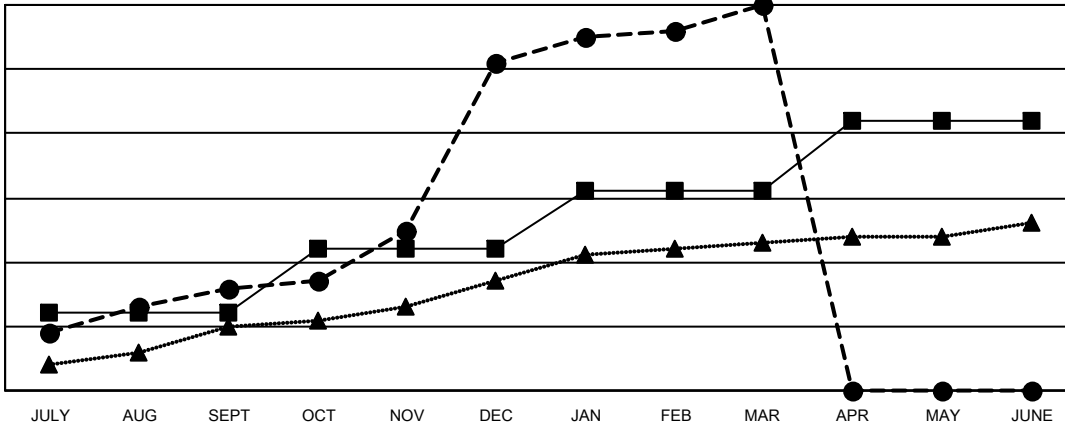
Multiple District 318

LOCATION: INDIA

Clubs			
RESULTS FOR 2020-2021			
QUARTER	NEW CLUB GOAL	NEW CLUBS	DROPPED CLUBS
JULY/AUG/SEPT	12	16	2
OCT/NOV/DEC	10	35	0
JAN/FEB/MAR	9	9	37
APR/MAY/JUNE	11	0	0

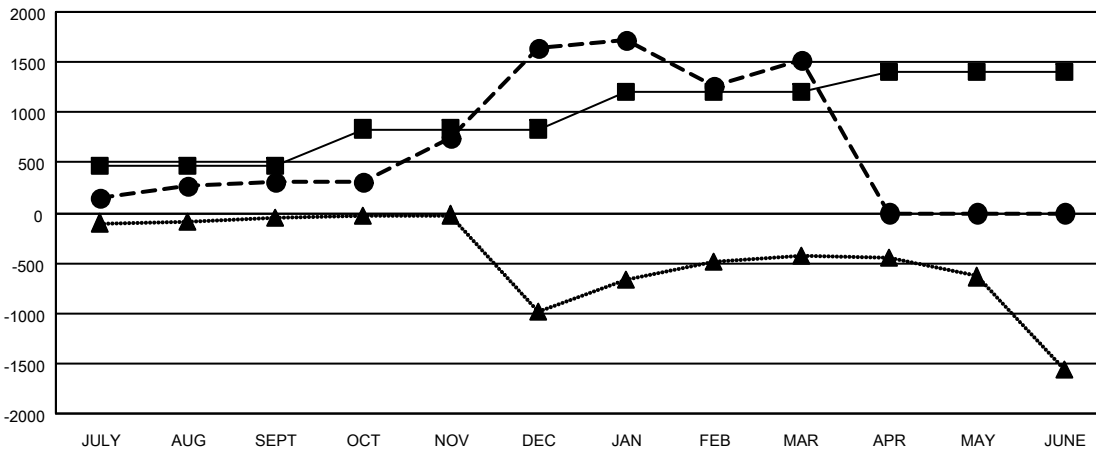
Members			
RESULTS FOR 2020-2021			
QUARTER	MEMBER GROWTH NET GOAL	MEMBER GROWTH ACTUAL	DROPPED MEMBERS ACTUAL (including transfers)
JULY/AUG/SEPT	460	928	573
OCT/NOV/DEC	375	2,160	738
JAN/FEB/MAR	365	842	825
APR/MAY/JUNE	205	0	0

GOALS AND ACTUAL NEW CLUBS CUMULATIVE



- - CURRENT YEAR GOALS FOR NEW CLUBS
- - CURRENT YEAR ACTUAL NEW CLUBS
- ▲ - LAST YEAR ACTUAL NEW CLUBS

GOALS AND ACTUAL MEMBERS CUMULATIVE



- - MEMBER GROWTH NET GOAL
- - MEMBER GROWTH ACTUAL
- ▲ - LAST YEAR MEMBERSHIP ACTUAL

DROPPED CLUBS: 39	
<u>DROPPED MEMBERS</u>	
DECEASED	76
CLUB CANCELLED	602
OTHER	1,458
TOTAL	2,136

426 CLUBS OF 727 ADDED 1 OR MORE NEW MEMBERS

[CLICK HERE FOR CUMULATIVE MEMBERSHIP DATA](#)

<u>GENDER DISTRIBUTION</u>	
MALE	19,681 (80.96%)
FEMALE	4,628 (19.04%)
TOTAL FAMILY UNIT MEMBERS	8,279
FAMILY MEMBERS PAYING HALF DUES	4,389